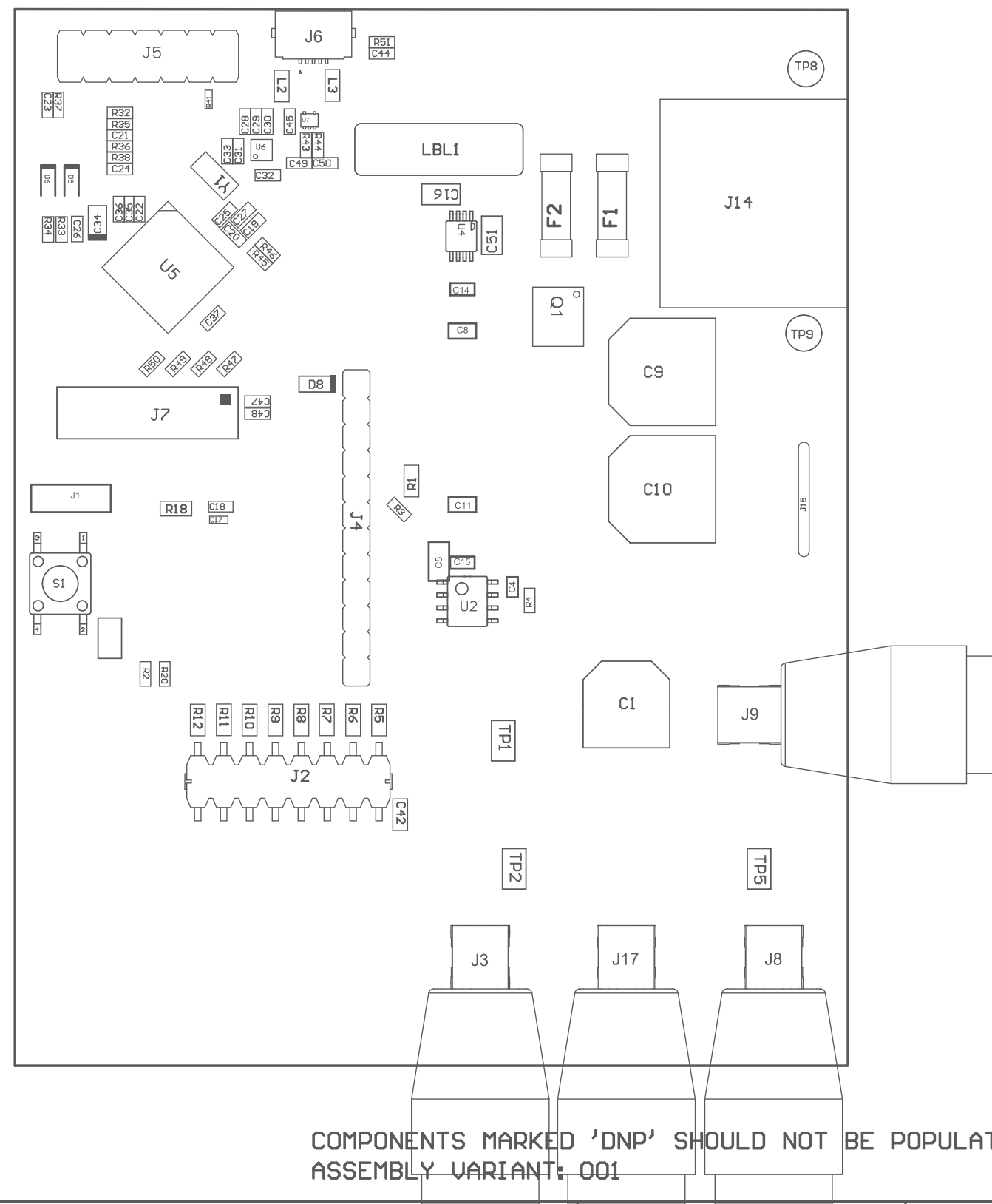


Z21 ■ Install label in silkscreened box after final wash. Text shall be 8 pt font. Text shall be per the Label Table in the PDF schematic.

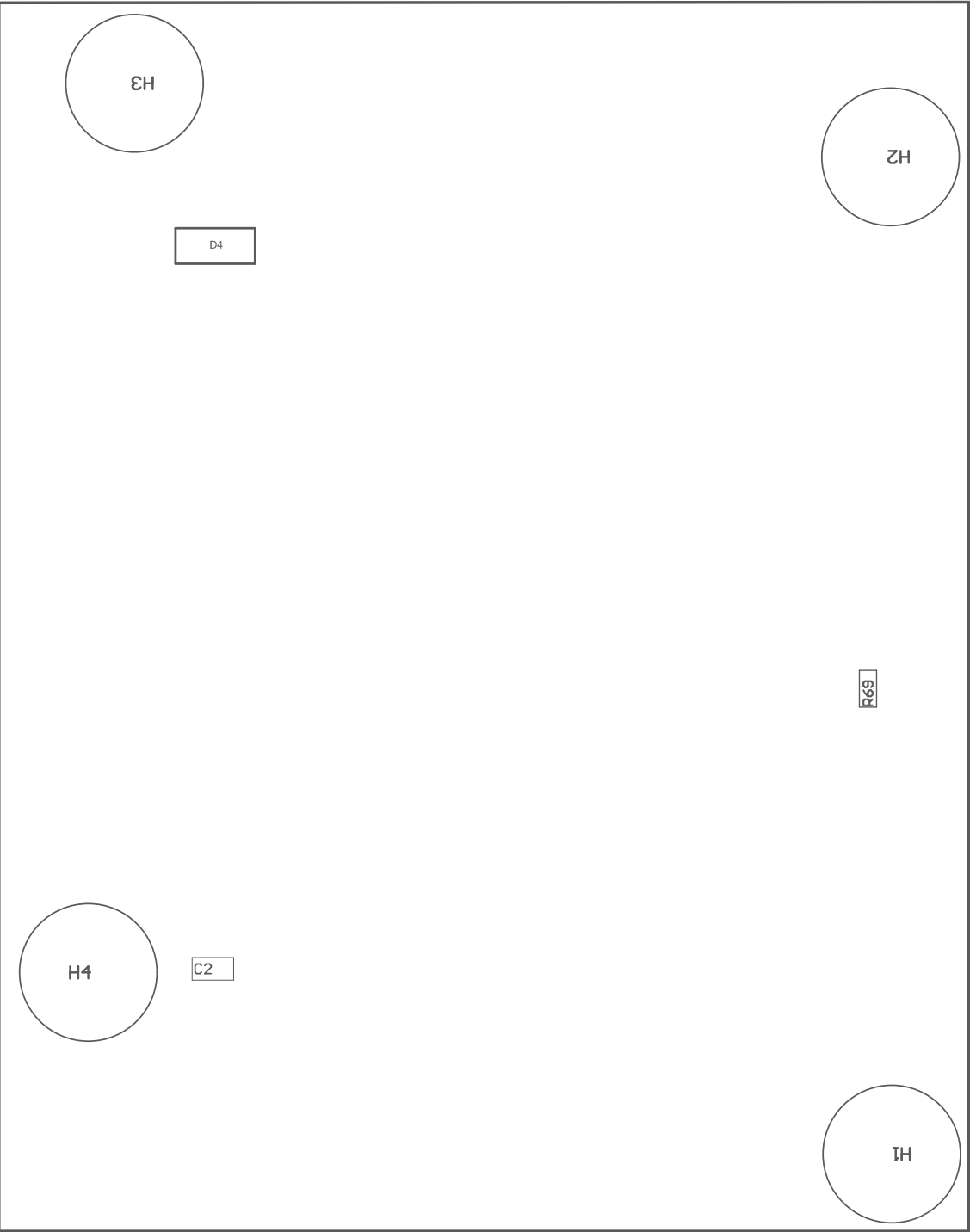
ZZ2 ■ These assemblies are ESD sensitive, ESD precautions shall be observed.

ZZ3 ■ These assemblies must be clean and free from flux and all contaminants. Use of no clean flux is not acceptable.

ZZ4 ■ These assemblies must comply with workmanship standards IPC-A-610 Class 2, unless otherwise specified.



PCB VIEWED FROM TOP SIDE	BOARD #: MD048	REV: E2	SUN REV: Not In VersionControl
	TID #: N/A		
PLOT NAME = Top Assembly Drawing	GENERATED : 2/6/2021 1:27:04 PM		TEXAS INSTRUMENTS



COMPONENTS MARKED 'DNP' SHOULD NOT BE POPULATED.
ASSEMBLY VARIANT: 001

PCB VIEWED FROM BOTTOM SIDE	BOARD #: MD048	REV: E2	SVN REV: Not In VersionControl
	TID #: N/A		
PLOT NAME = Bottom Assembly Drawing	GENERATED : 2/6/2021 1:27:04 PM		TEXAS INSTRUMENTS